

*Features:

- HALED patent optics design, similar to halogen light effect
- Can replace halogen lamp directly
- Easy and quick installation
- $PF > 0.85$, flicker free, following new ErP
- Dimmable by triac dimmer, It is compatible with both front-cut dimming and rear-cut dimming.
- 6W HALED lamp replace 75W halogen lamp
- CRI 97, R9 > 95
- Low UGR, high center light intensity
- Cold-forged process, excellent heat dissipation
- Between the lamp body and the driver, a gap of 3 to 5 millimeters should, further enhancing the performance of the product.
- Suitable for indoor and outdoor enclosed luminaires
- Lifespan 40000 hrs, 5 years warranty
- High energy efficiency



CE RoHS ErP✓

Applications

- Residential application and hotel lighting.
- Commercial lighting like restaurants, bars, cafes, etc.

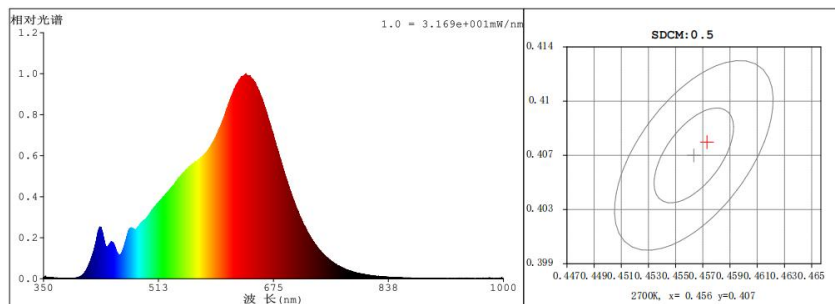
Technical data

Part No.	Type of installation
M50TU3WC75T6B-44001	Double wiring
Electrical specifications	
Wattage (W)	6W
AC input voltage (V)	AC200V-240V
Frequency (Hz)	50/60Hz
Flicker metric PST	0.023
Total harmonic distortion (THD)	24%
Max. no. of lamps on B16A circuit breaker	420
Max. no. of lamps on C16A circuit breaker	420
Photometric specifications	
Color temperature (CCT)	3000K-2000K
Chromaticity coordinate (x/ y)	3000K: 0.440/ 0.403 2000K: 0.520/ 0.415
Useful luminous flux (lm)	500lm \pm 5%

Power factor	>0.85
Current	30mA
DC output voltage (V)	-
Stroboscopic effect metric SVN	0.25
Dimmable	Dim to warm
Max. no. of lamps on C10A circuit breaker	200
CRI/ R9	97/ >95(Min.)
Standard deviation of colour	≤ 5 SDCM
Luminous efficiency (lm/W)	98lm/ W(ERP)

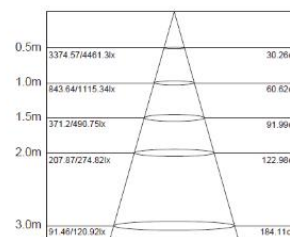
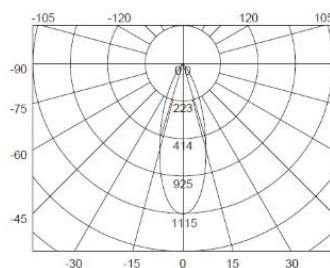
UGR	≤19
-----	-----

Photometric Information



EAN	Colour	Beam angle	Peak Luminous intensity
-----	--------	------------	-------------------------

44001	Black	36°	1100cd
-------	-------	-----	--------



Mechanical specifications

Housing material	Aluminium
Optical cover/ lens material	AlReflector+PC+Glass
Width/ diameter	44.2mm
Product weight	135g

Lifespan

Number of switching cycles	100,000-
L80/B10 service life at 25°C	40,000 hrs
Warranty	5 Years

Application parameters

Working temperaturer range	-20~+50°C
----------------------------	-----------

Package

Individual package length	50mm
Individual package height	65mm
Driver	Internal

Housing Colour	Black
Length/ diameter	50mm
Height	40mm

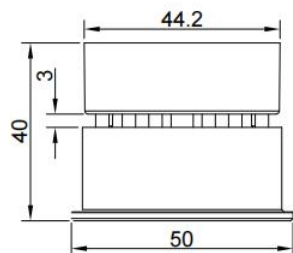
L70/B50 service life at 25°C	50,000 hrs
L90/B10 service life at 25°C	20,000 hrs

Storage temperature range	-20~+70°C
---------------------------	-----------

Individual package width	50mm
Gross weight (single item)	135g
Packaging unit	100pcs

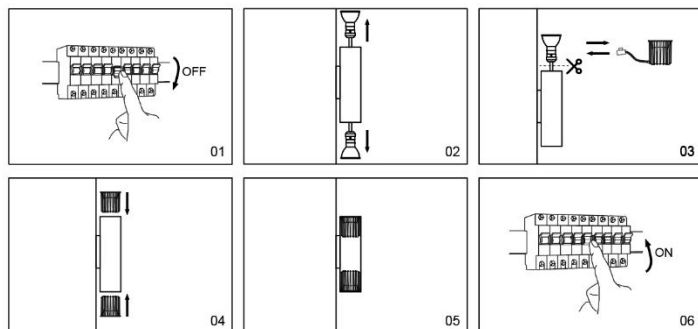
Shipping box length	580mm	Shipping box width	285mm
Shipping box height	185mm	Gross weight (Shipping box)	12kgs

Technical Drawings (mm)



Please read the entire instruction manual before using the product and reserve it for future reference. We reserve the right for any error in text or image and any necessary change made to technical data. If you have any question regarding technical problems, please contact our Customer Services.

Replacement



Cautions:

- Don't touch the lamp when it is lighted
- Don't use it in enclosed luminaire
- Power off before replacement
- Do not in violation of any fire regulations when using
- Consult professional electricians for technical support
- If the cable is damaged, it must be replaced by the manufacturer and its service agent, or qualified person in order to avoid hazards.